

G1913 Cable Gland



Zone 1

Zone 2

Zone 21

Zone 22

IP67

Protection

- Ex db IIC Gb
- Ex eb IIC Gb
- Ex nR IIC Gc
- Ex tb IIIC Db

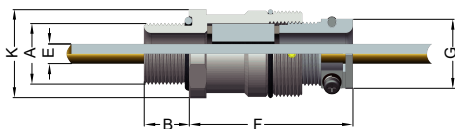
Standards

IEC 60079-0
IEC 60079-1
IEC 60079-7
IEC 60079-15
IEC 60079-31

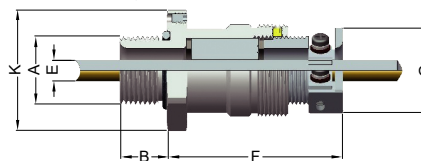
Technical Data

Operating Temperature	-50°C ~ +110°C
Degree of Protection	IP67
Material	Gland Seal
	SUS304 or SUS316 or Electroless Nickel Plated Brass EPDM
Entrance Thread	G 1", M32, NPT 1-1/2", G1-1/2", M50

Type B
▼ Without Socket Set Screw



Type A
▼ With Socket Set Screw



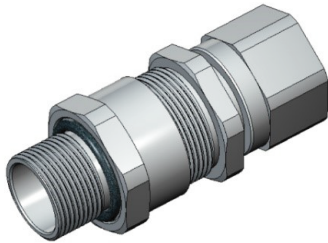
Part No.	Explosion Protection	Thread type "A"	Thread Length with grooving "B"	Cable Acceptance "E"		Gland Length "F" (less entry)	Across Flats "G"	Hexagon Dimensions "K" Type B/A
				max	min			
THT-2GG100Uxdx1615	Ex db IIC Gb	G 1"	23.0	16.0	15.0	67.1	38.0	50.0/56.0
THT-2GG100Uxdx1817		G 1"	23.0	18.0	17.0	67.1	38.0	50.0/56.0
THT-2GG100Uxdx2019		G 1"	23.0	20.0	19.0	67.1	38.0	50.0/56.0
THT-2GG100Uxdx2221		G 1"	23.0	22.0	21.0	67.1	38.0	50.0/56.0
THT-2GM032Uxdx1615		M32 x1.5P	18.0	16.0	15.0	67.1	38.0	50.0/56.0
THT-2GM032Uxdx1817		M32 x1.5P	18.0	18.0	17.0	67.1	38.0	50.0/56.0
THT-2GM032Uxdx2019		M32 x1.5P	18.0	20.0	19.0	67.1	38.0	50.0/56.0
THT-2GM032Uxdx2221		M32 x1.5P	18.0	22.0	21.0	67.1	38.0	50.0/56.0
THT-2GN112Uxdx2827	Ex eb IIC Gb Ex nR IIC Gc Ex tb IIIC Db	NPT 1-1/2"	23.0	28.0	27.0	71.1	55.0	70.0/76.0
THT-2GN112Uxdx3029		NPT 1-1/2"	23.0	30.0	29.0	71.1	55.0	70.0/76.0
THT-2GN112Uxdx3231		NPT 1-1/2"	23.0	32.0	31.0	71.1	55.0	70.0/76.0
THT-2GN112Uxdx3433		NPT 1-1/2"	23.0	34.0	33.0	71.1	55.0	70.0/76.0
THT-2GG112Uxdx2827		G 1-1/2"	23.0	28.0	27.0	71.1	55.0	70.0/76.0
THT-2GG112Uxdx3029		G 1-1/2"	23.0	30.0	29.0	71.1	55.0	70.0/76.0
THT-2GG112Uxdx3231		G 1-1/2"	23.0	32.0	31.0	71.1	55.0	70.0/76.0
THT-2GG112Uxdx3433		G 1-1/2"	23.0	34.0	33.0	71.1	55.0	70.0/76.0
THT-2GM050Uxdx2827		M50 x1.5P	18.0	28.0	27.0	71.1	55.0	70.0/76.0
THT-2GM050Uxdx3029		M50 x1.5P	18.0	30.0	29.0	71.1	55.0	70.0/76.0
THT-2GM050Uxdx3231		M50 x1.5P	18.0	32.0	31.0	71.1	55.0	70.0/76.0
THT-2GM050Uxdx3433		M50 x1.5P	18.0	34.0	33.0	71.1	55.0	70.0/76.0

Model Reference: THT-2GG100U①d②1615

①: Material, X = SUS 304, S = SUS 316, A = Electroless Nickel Plated Brass

②: Gland body type, A = With Socket Set Screw (Type A), B = Without Socket Set Screw (Type B)

G1913C Cable Gland



**Zone
1**

**Zone
2**

**Zone
21**

**Zone
22**

IP66

Protection

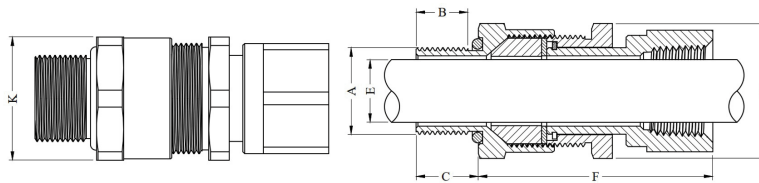
- Ex eb IIC Gb
- Ex nR IIC Gc
- Ex tb IIIC Db

Standards

IEC 60079-0
IEC 60079-7
IEC 60079-15
IEC 60079-31

Technical Data

Operating Temperature	-50°C ~ +110°C
Degree of Protection	IP66
Material	Gland Seal SUS304 or SUS316 or Electroless Nickel Plated Brass EPDM
Entrance Thread	M25x1.5P, G 3/4", NPT 3/4"



Part No.	Thread type "A"	Thread length "B"	Entry length "C"	Cable Acceptance "E"		Gland Length "F" (less entry)	Across Flats "G"	Hexagon Dimensions "K"
				Min.	Max.			
THT-2GN034UxdC1120	NPT 3/4"	20.15	N/A	11.0	20.0	74.7	38.8	35.8
THT-2GG034UxdC1120	G(PF)3/4"	16.5	19.5	11.0	20.0	72.9	38.8	35.8
THT-2GM025UxdC1120	M25x1.5P	15.0	18.0	11.0	20.0	72.9	38.8	35.8

Model Reference: THT-2GN034U①dC1120

①: Material, X = SUS 304, S = SUS 316, A = Electroless Nickel Plated Brass

