

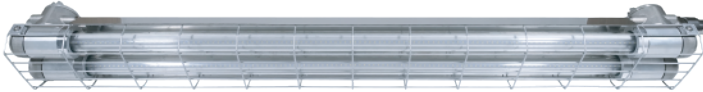
L2101

Hazardous Location LED Lighting

2ft-Dual Tubes



4ft-Dual Tubes



4ft-Single Tube



4ft- Dual Yellow Tubes



Zone
1

Zone
2

Zone
21

Zone
22

IP67

NEMA
6

Protection

- Ex db IIB+H2 T6 Gb
- Ex tb IIIC T80°C Db
- Ⓜ II 2 G Ex db IIB+H2 T6 Gb
- Ⓜ II 2 D Ex tb IIIC T80°C Db

Standards

IEC 60079-0
IEC 60079-1
IEC 60079-31
EN IEC 60079-0
EN 60079-1
EN 60079-31

Net Weight:

2ft-Single Tube:5.0kg (11.0 lb) / 4ft-Single Tube:7.7kg (16.9 lb)
2ft-Dual Tube:7.3kg (16.1 lb) / 4ft-Dual Tube:10.4kg (22.8 lb)

Technical Data

Explosion-proof LED Tube				
Size	2ft-Single Tube	4ft-Single Tube	2ft-Dual Tubes	4ft-Dual Tubes
Watt.(±10%)	9W	18W	18W	36W
Volt.(±10%)	100V-277V AC			
Light Color	Warm White (3000K) / Natural White (4000K) / Daylight (5000K) / Cool White (6500K)			
Lm / W (±10%)	≥100lm			

Yellow Tube Light				
Size	2ft-Single Tube	4ft-Single Tube	2ft-Dual Tubes	4ft-Dual Tubes
Watt.(±10%)	10W	20W	20W	40W
Volt.(±10%)	100V-277V AC			
Light Color	Yellow			

Special Lighting: UVC Light (270-285 nm)				
Size	2ft-Single Tube	4ft-Single Tube	2ft-Dual Tubes	4ft-Dual Tubes
Watt.(±10%)	10W	20W	20W	40W
Volt.(±10%)	100V-240V AC			

Amps	9W: 0.03A~0.09A, 10W: 0.04A~0.10A, 18W: 0.06A~0.18A, 20W: 0.07A~0.20A, 36W: 0.13A~0.36A, 40W: 0.14A~0.40A	
Ambient Temperature	-20°C ~ +40°C, T6	
Power Factor	≥0.95/100VAC, ≥0.95/110VAC, ≥0.9/220VAC, ≥0.8/277VAC, ≥0.5/UVC Light	
CRI	≥70 (Excluding Yellow Tube/UVC Light)	
Beam Angle	X-110° / Y-110°	
Frequency	50 / 60 Hz	
Degree of Protection	IP67 / NEMA 6	
Material	• Enclosure • Lighting Tube	Aluminum Alloy Glass
LED Service Life	60,000 hrs, 10,000 hrs(UVC Light)	
Entrance Thread	1 x M25	

Technical drawing of the lighting fixture showing side and end views with dimensions in millimeters and inches.

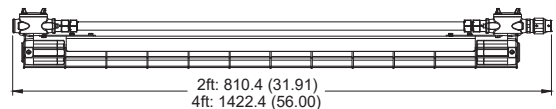
Side View Dimensions:

- 2ft: 810.4 (31.91)
- 4ft: 1422.4 (56.00)

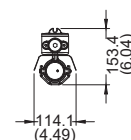
End View Dimensions:

- Single Tube: 114.1 (4.49) mm, 153.4 (6.04) mm
- Dual Tubes: 171.2 (6.74) mm, 158.9 (6.26) mm

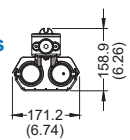
Dimension in Millimeters (inches)



Single Tube



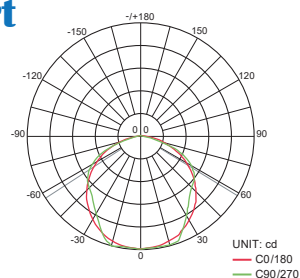
Dual Tubes



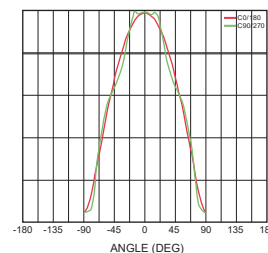
Dimension in Millimeters (inches)

Optical Report

Polar Luminous
Intensity Distribution

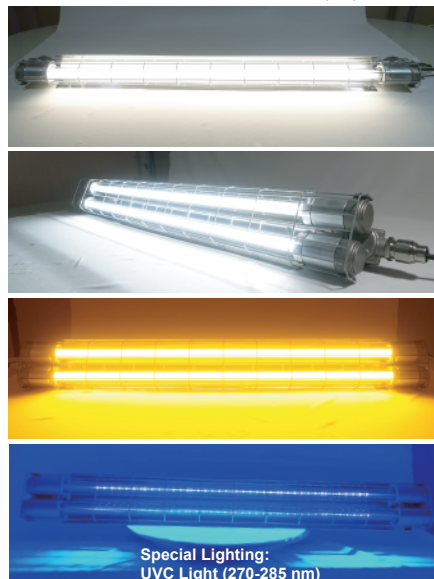
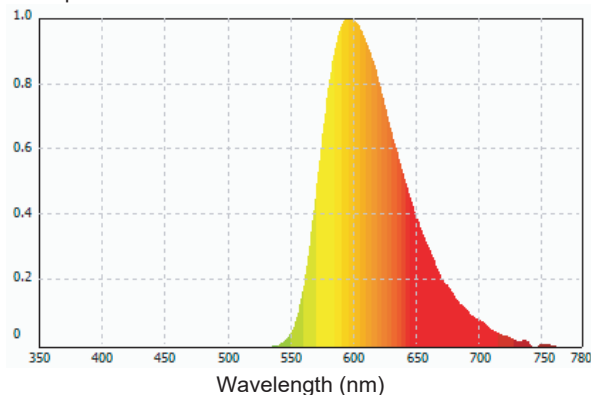


Luminous
Intensity Distribution Diagram



Yellow Light - Spectral Distribution

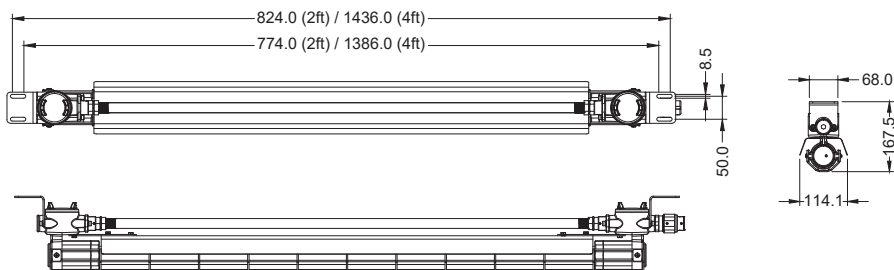
Relative Spectral



Mounting Option & Dimensions (All in mm)

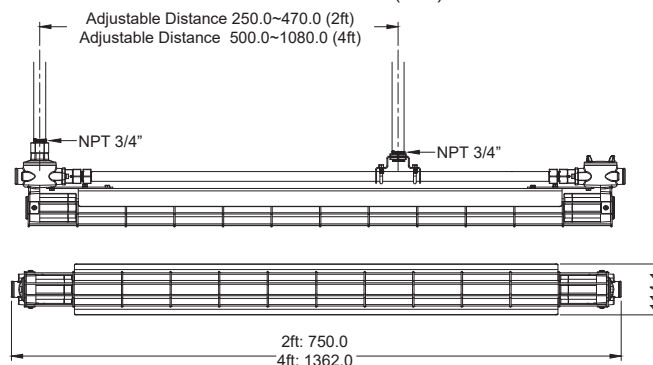
Single Tube

Ceiling (C90) / Wall Mount 90° (W90)



2ft-Single Tube: 5.4kg (11.9 lb)
4ft-Single Tube: 8.1kg (17.9 lb)

Pendant Mount (P90)



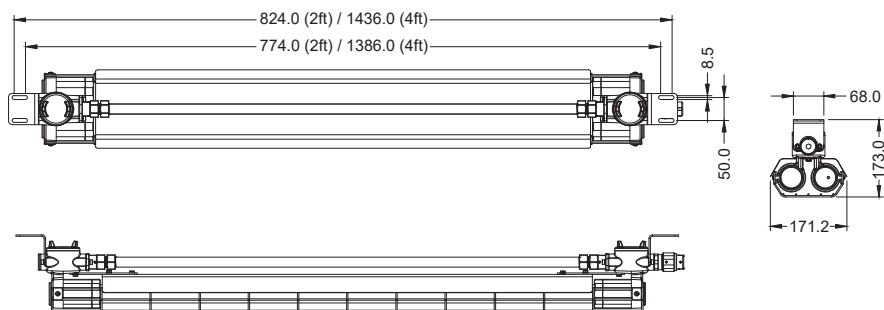
2ft-Single Tube: 5.3kg (11.7 lb)
4ft-Single Tube: 8.0kg (17.6 lb)

(The pendant mount doesn't include electrical tubes, but with installation holes reserved.)

Mounting Option & Dimensions (All in mm)

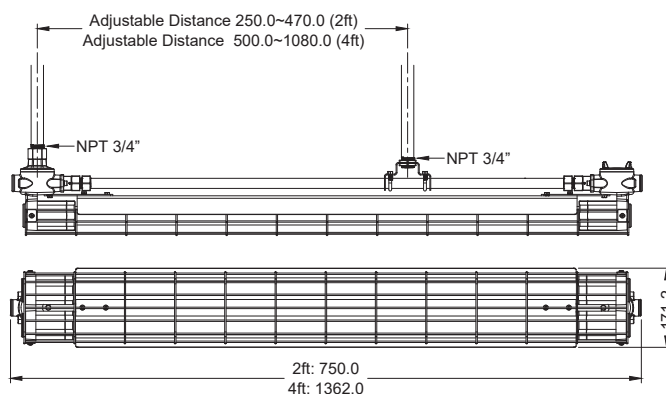
Dual Tubes

Ceiling (C90) / Wall Mount 90° (W90)



2ft-Dual Tube: 7.7kg (17.0 lb)
4ft-Dual Tube: 10.8kg (23.8 lb)

Pendant Mount (P90)



2ft-Dual Tube: 7.6kg (16.8 lb)
4ft-Dual Tube: 10.7kg (23.6 lb)

(The pendant mount doesn't include electrical tubes, but with installation holes reserved.)

Model Code

THT

E

2101

D

D

W

H

C6

C90

①

②

③

④

⑤

⑥

① Length of Luminaire

A=2ft single tube (For 9W or 10W only)
B=4ft single tube (For 18W or 20W only)
C=2ft double tubes (For 18W or 20W only)
D=4ft double tubes (For 36W or 40W only)

② Type of Top Cover

C=Top cover with opening
D=Top cover without opening

*Pendant Mount only with C type
(top cover with opening).

③ Light Color

W=Warm white/3000K (For 9W, 18W or 36W only)
N=Natural white/4000K (For 9W, 18W or 36W only)
D=Daylight/5000K (For 9W, 18W or 36W only)
C=Cool white/6500K (For 9W, 18W or 36W only)
Y=Yellow tube (For 10W, 20W or 40W only)
U=UVC light (For 10W, 20W or 40W only)

④ Voltage

H=100~277 Vac
A=100~240 Vac (For UVC light only)

⑤ Wattage

Z9=9W (For 2ft single tube only)
A8=18W (For 2ft double tubes or 4ft single tube only)
C6=36 W (For 4ft double tubes only)
A0=10W (For 2ft single tube only)
B0=20W (For 2ft double tubes or 4ft single tube only)
D0=40 W (For 4ft double tubes only)

⑥ Mounting Bracket Type

C90=Ceiling
W90=Wall Mount 90°
P90=Pendant