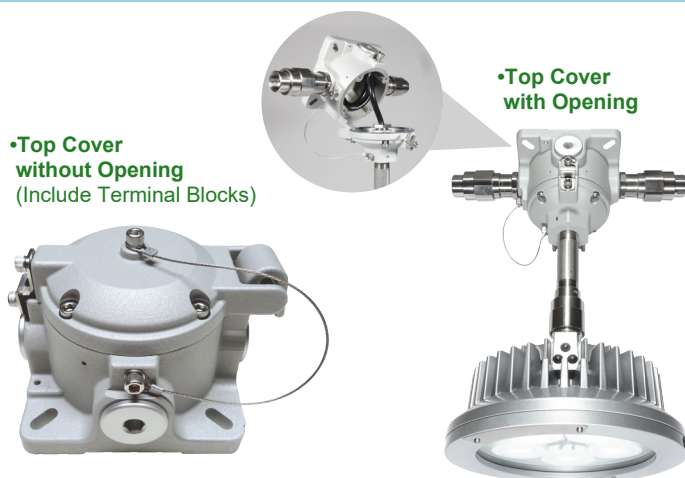


A1919 Explosion-proof Junction Box



Zone 1 Zone 2 Zone 21 Zone 22 IP67 NEMA 6

Protection

- Ex eb IIC T6 Gb
- Ex tb IIIC T80°C Db

Standards

IEC 60079-0
IEC 60079-7
IEC 60079-31

Technical Data

Rated Operational Voltage	500V
Terminal Connection Type	Terminal Block (Only for "THT-2J1919Dxxxxx00", Top Cover Without Opening) CE Type Close-end Connector
Current Capacity	Max. 19.5A (Please see A1 for details)
Ambient Temperature	-40°C ~ +55°C, T6
Material	<ul style="list-style-type: none"> • Enclosure: Aluminum alloy • Sealing Gasket: Silicone
Entrance Thread	M16, M20, M25, NPT 1/2", NPT 3/4", G(PF) 1/2", G(PF) 3/4"
The cross sectional area of wire	<ul style="list-style-type: none"> • Fine-stranded conductor: 0.5 ~ 6 mm² (20 ~ 10 AWG) • Solid conductor: 0.5 ~ 6 mm² (20 ~ 10 AWG)

A1 - Allowable Ampacities of Insulated Conductors

Cross-sectional Area	Number of Conductors	Maximum Current for each conductor (Terminal Block)	Maximum Current for each conductor (Close-end Connector)
AWG10	4	19.5 A	16.5 A
	8	16.5 A	15.0 A
AWG12	4	16.5 A	15.0 A
	8	13.5 A	12.0 A
AWG14	4	16.5 A	13.5 A
	8	13.5 A	12.0 A
AWG16	4	12.0 A	10.5 A
	8	9.0 A	9.0 A
AWG18	4	7.5 A	6.0 A
	8	6.0 A	6.0 A
AWG20	4	6.0 A	4.5 A
	8	4.5 A	4.5 A

Model Code

THT-	2J	1919	D	4	G	034	00
			①	②	③	④	

① **Top cover type**

C=Top cover with opening
D=Top cover without opening

③ **Thread type**

G=G(PF), N=NPT, M=Metric

② **Quantity of Terminal**

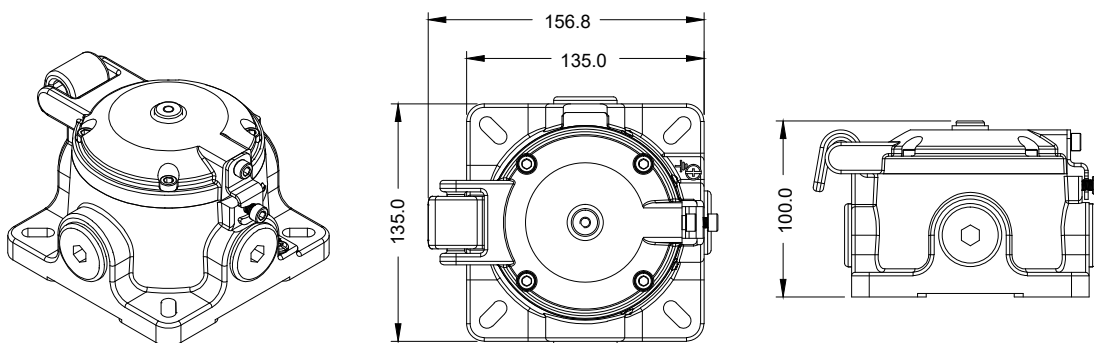
0=without terminal blocks
1=1 pcs, 2=2 pcs, 3=3 pcs, 4=4 pcs

④ **Thread size**

016=M16, 020=M20, 025=M25, 034=3/4", 012=1/2"

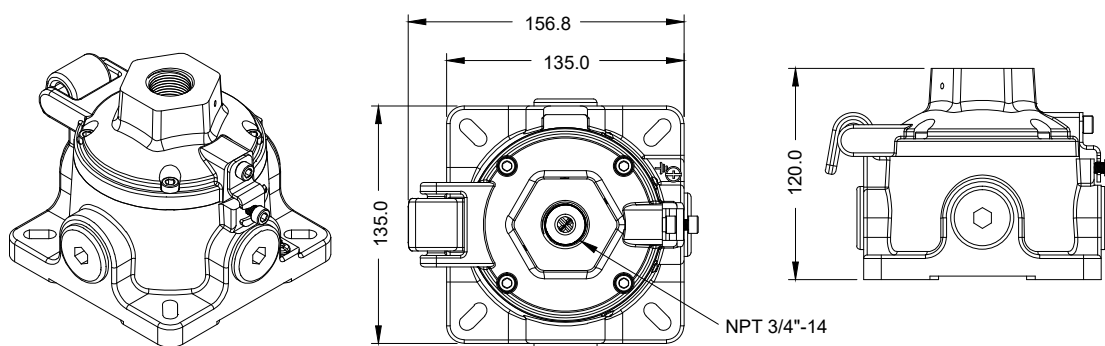
Dimensions (All in mm)

Top Cover without Opening



1.8 kg (3.9 lb)

Top Cover with Opening



2.0 kg (4.4 lb)