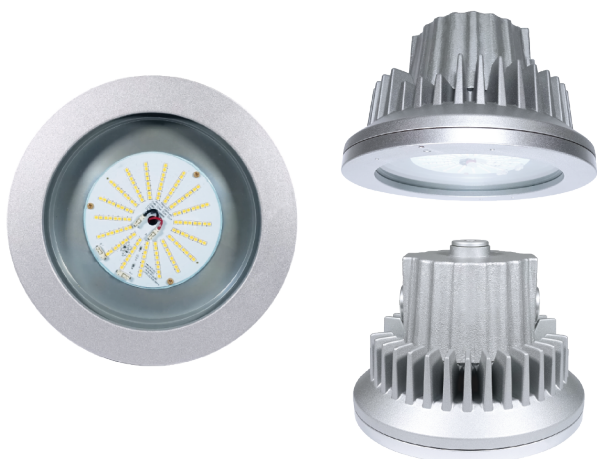


# L2102

## Luminaires For Use In Hazardous Locations



**CID1**  
Group  
B, C, D

**IP67**

**NEMA**  
6

### Protection

- Class I, Division 1  
Group B, C, D

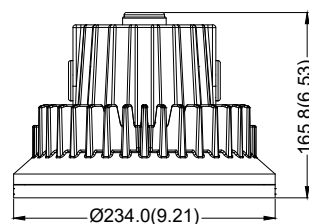
### Standards

UL 844  
UL 1598 Luminaires  
UL 8750  
CSA C22.2 No. 137-18  
CSA C22.2 No. 250.0  
CSA C22.2 No. 250.13

Net Weight: 6.6 kg (14.6 lb)

## Technical Data

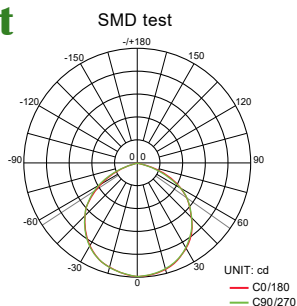
Rated Voltage (±10%)	100V~277V AC
Watts (±10%)	30W / 35W / 40W / 45W / 50W / 55W / 60W
Amps	0.11A~0.60A
Color of LED Light	3000K (Warm White) / 5000K (Cool White)
Ambient Temperature	-20°C ~ +40°C, -20°C ~ +50°C
Power Factor	cos ≥ 0.9
CRI	Cool White ≥ 70 / Warm White ≥ 80
Lm / W (±10%)	145 lm/w
Beam Angle	X-110° / Y-110°
Frequency	50 / 60 Hz
Degree of Protection	IP67 / NEMA 6
Material	<ul style="list-style-type: none"> <li>Enclosure: Aluminum alloy</li> <li>Glass: Tempered glass</li> </ul>
LED Service Life	60,000 hrs
Entrance Thread	3 × NPT 3/4" or M25



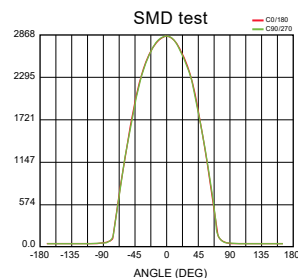
Dimension in Millimeters (inches)

## Optical Report

Polar Luminous  
Intensity Distribution



Luminous  
Intensity Distribution Diagram



## Model Code

THT	E	2102	A	B	K	C	H	F0	WHT
						①		②	

### ① C.C.T.

C=Cool White  
W=Warm White

### ② Wattage

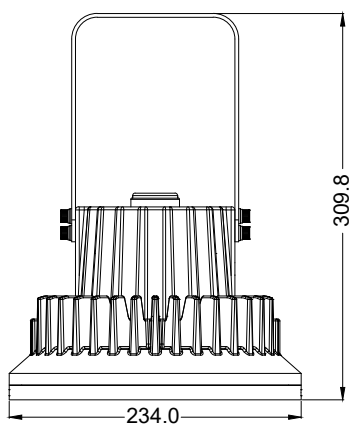
C0= 30W E0= 50W  
C5= 35W E5= 55W  
D0= 40W F0= 60W  
D5= 45W



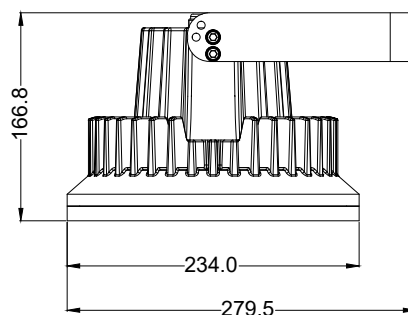
## Mounting Option & Dimensions (All in mm)

Wall Mount / Pendant Mount (WHT)

Pendant Mount



Wall Mount



7.6 kg (16.8 lb)

### Applicable Area

- Oil Refinery Complex
- Painting Facility
- Transporting Liquefied
- Offshore Platform
- Petrochemical Complex
- Transporting Nature Gas
- Petroleum Gas
- (Oil and Natural Gas)