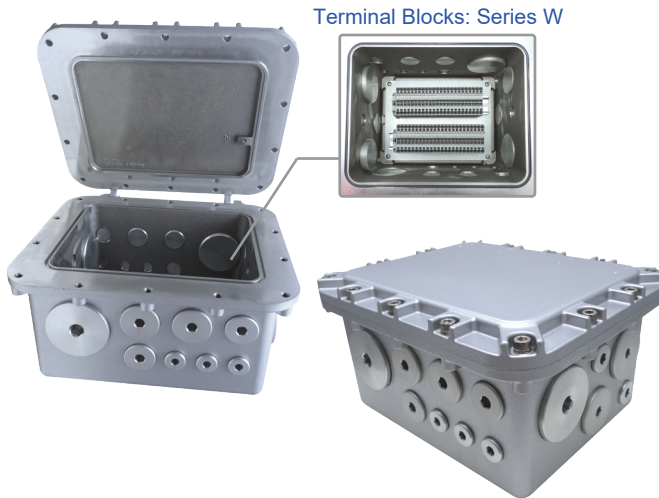


# A1723

## Explosion-proof Junction Box



### Protection

- Ex db IIB+H2 T5 Gb
- Ex tb IIIC T95°C Db
- ⓂII 2 G Ex db IIB+H2 T5 Gb
- ⓂII 2 D Ex tb IIIC T95°C Db

### Standards

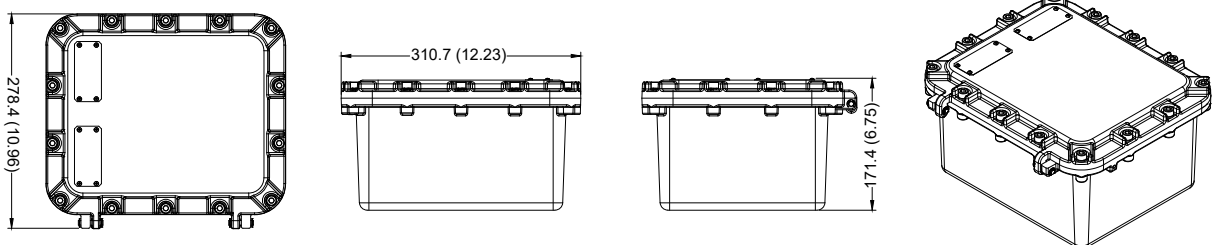
IEC 60079-0  
IEC 60079-1  
IEC 60079-31  
EN 60079-0  
EN 60079-1  
EN 60079-31

Net Weight: 13.7 kg (30.2 lb)

## Technical Data

Ambient Temperature	-20°C~+50°C, T5	
Degree of Protection	IP67 / NEMA 6	
Material <ul style="list-style-type: none"> <li>• Enclosure</li> <li>• O-ring (Gasket)</li> <li>• Accessories</li> </ul>	Aluminum alloy Silicone SUS 304	
Rated Terminal Block Voltage/Current	Terminal Blocks Series D D15:1000V/150A D10:630V/120A D06:630V/76A D03:630V/25A D02:630V/20A	Terminal Blocks Series W WA0:1000V/100A W16:800V/50A W10:800V/40A W06:800V/30A W04:800V/20A
Thread Size	Please refer to Table 1.	
Cable OD Range	NPT 3/8"(M16)hole --- 3.1~8.6mm NPT 1/2"(M20)hole --- 6.5~14.0mm NPT 3/4"(M25)hole --- 11.0~20.0mm NPT 1"(M32)hole --- 17.0~26.3mm NPT 1-1/4"(M40)hole --- 22.0~32.2mm NPT 1-1/2"(M50)hole --- 29.5~38.2mm NPT 2"(M63)hole --- 35.6~44.0mm	

## Dimensions [All in mm (inches)]



## Defined Area & Removal Rule (For Customize Type)

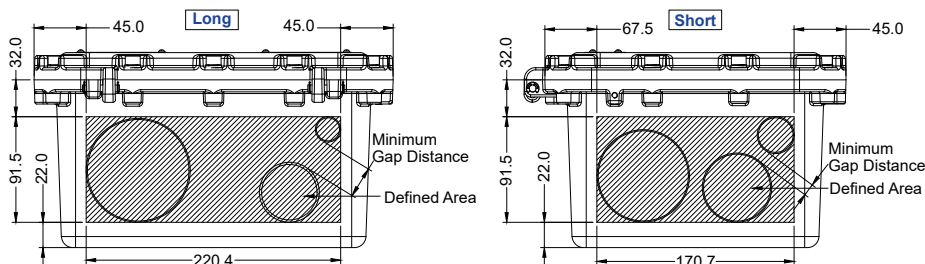
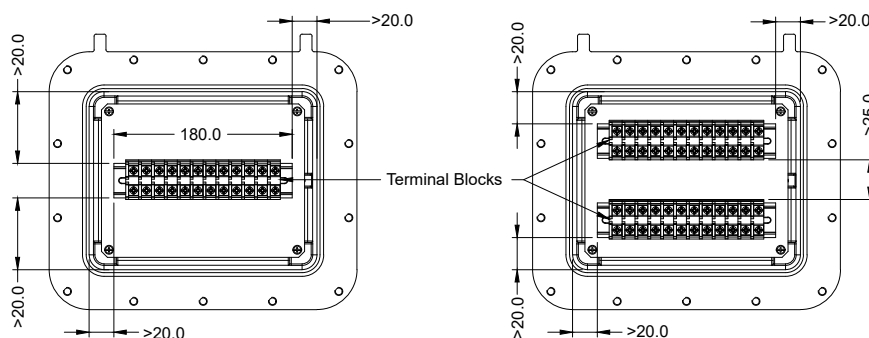


Table 1 (Quantity of Thread Holes)			Table 2 (Minimum gap distance between the Thread holes)							
Type\side	Short	Long	Thread size	3/8(M16)	1/2(M20)	3/4(M25)	1(M32)	1-1/4(M40)	1-1/2(M50)	2(M63)
M16 / NPT 3/8"	8	10	3/8(M16)	18.0						
M20 / NPT 1/2"	8	10	1/2(M20)	18.0	18.0					
M25 / NPT 3/4"	6	8	3/4(M25)	18.0	18.0	18.0				
M32 / NPT 1"	6	8	1(M32)	17.5	17.5	19.0	18.0			
M40 / NPT 1-1/4"	2	3	1-1/4(M40)	19.5	19.5	20.0	20.0	22.0		
M50 / NPT 1-1/2"	2	3	1-1/2(M50)	19.5	19.5	20.5	20.0	22.0	22.0	
M63 / NPT 2"	1	2	2(M63)	20.0	20.0	21.0	20.5	22.0	22.5	22.5

## Quantity & Specification of Terminal Block



Terminal Blocks Specification (Table 3.)					
Series	Terminal type	Electrical data	Max Quantity	The cross sectional area of wire	Strip Length
D15	Screw type	1000V / 150A	6	10.0~70.0mm <sup>2</sup>	N/A
D10		630V / 120A	5	10.0~25.0mm <sup>2</sup> (Bare wire) 10.0~50.0mm <sup>2</sup>	N/A
D06		630V / 76A	9	0.75~16.0mm <sup>2</sup>	N/A
D03		630V / 25A	(One row)8 (Two row)24	0.34~4.0mm <sup>2</sup>	N/A
D02		630V / 20A	(One row)10 (Two row)20	0.34~2.5mm <sup>2</sup>	N/A
WA0	Cage Clamp type	1000V / 100A	10	6~35mm <sup>2</sup>	23mm
W16		800V / 50A	14	Solid conductor :0.5~16mm <sup>2</sup> Solid conductor, push-in termination :6~16mm <sup>2</sup> Fine-stranded conductor :0.5~25mm <sup>2</sup>	18~20mm
W10		800V / 40A	14	Solid conductor :0.5~16mm <sup>2</sup> Solid conductor, push-in termination :4~16mm <sup>2</sup> Fine-stranded conductor :0.5~16mm <sup>2</sup>	17~19mm
W06		800V / 30A	18	Solid conductor :0.5~10mm <sup>2</sup> Solid conductor, push-in termination :2.5~10mm <sup>2</sup> Fine-stranded conductor :0.5~10mm <sup>2</sup>	13~15mm
W04		800V / 20A	(One row)20 (Two row)40	Solid conductor :0.5~6mm <sup>2</sup> Solid conductor, push-in termination :1~6mm <sup>2</sup> Fine-stranded conductor :0.5~6mm <sup>2</sup>	11~13mm

## Model Code

### -Standards

<b>THT</b>	<b>J</b>	<b>1723</b>	<b>0</b>	<b>D15</b>	<b>01</b>	<b>0</b>	<b>0</b>	<b>0</b>	<b>0</b>
			①	②	③	④	⑤	⑥	

#### ① Terminal Type

- D series      ●W series
- D15, D10      WA0, W16
- D06, D03      W10, W06
- D02            W04

#### ② Quantity of Terminal

01=1Pcs, 10=10Pcs  
(The max. quantity of terminal, please refer to Table 3.)

#### ③ Thread Type of Side A

0=No thread hole

- |          |                 |
|----------|-----------------|
| 1=M63 x1 | A=NPT 2" x1     |
| 2=M50 x2 | B=NPT 1-1/2" x2 |
| 3=M40 x2 | C=NPT 1-1/4" x2 |
| 4=M32 x6 | D=NPT 1" x6     |
| 5=M25 x6 | E=NPT 3/4" x6   |
| 6=M20 x8 | F=NPT 1/2" x8   |
| 7=M16 x8 | G=NPT 3/8" x8   |

#### ④ Thread type of side B

0=No thread hole

- |          |                 |
|----------|-----------------|
| 1=M63 x1 | A=NPT 2" x1     |
| 2=M50 x2 | B=NPT 1-1/2" x2 |
| 3=M40 x2 | C=NPT 1-1/4" x2 |
| 4=M32 x6 | D=NPT 1" x6     |
| 5=M25 x6 | E=NPT 3/4" x6   |
| 6=M20 x8 | F=NPT 1/2" x8   |
| 7=M16 x8 | G=NPT 3/8" x8   |

#### ⑤ Thread type of side C

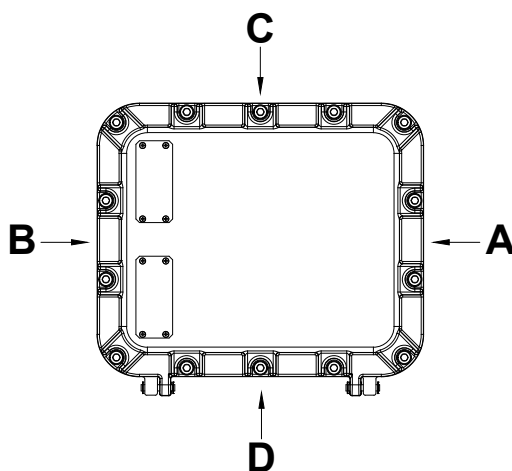
0=No thread hole

- |           |                 |
|-----------|-----------------|
| 1=M63 x2  | A=NPT 2" x2     |
| 2=M50 x3  | B=NPT 1-1/2" x3 |
| 3=M40 x3  | C=NPT 1-1/4" x3 |
| 4=M32 x8  | D=NPT 1" x8     |
| 5=M25 x8  | E=NPT 3/4" x8   |
| 6=M20 x10 | F=NPT 1/2" x10  |
| 7=M16 x10 | G=NPT 3/8" x10  |

#### ⑥ Thread type of side D

0=No thread hole

- |           |                 |
|-----------|-----------------|
| 1=M63 x2  | A=NPT 2" x2     |
| 2=M50 x3  | B=NPT 1-1/2" x3 |
| 3=M40 x3  | C=NPT 1-1/4" x3 |
| 4=M32 x8  | D=NPT 1" x8     |
| 5=M25 x8  | E=NPT 3/4" x8   |
| 6=M20 x10 | F=NPT 1/2" x10  |
| 7=M16 x10 | G=NPT 3/8" x10  |



### -Customize (Below is model code for customize when standards cannot conform the customer requirement.)

<b>THT</b>	<b>J</b>	<b>1723</b>	<b>XXXXXXXXXX</b>
			①

#### ① Variant number

## Mounting Type

Wall Mount

